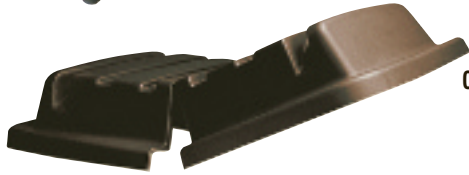




A



B



C



D



E



**A. Utility Trucks**

Provides quick and easy mobility for all types of jobs. Single-step sidewall design features reinforcing band to increase wall strength and prevent bowing; also allows nesting for compact storage. Heavy-duty, all-metal frame. Rugged, smooth-rolling casters. (Optional lid sold separately.)

No.	Capacity/ Cubic Ft.	Size (L x W x H)	Shpg. Wt.	Each
◆RCP 4712 BLA	800 lb./12	43¼ x 28 x 33¾	62 lbs.	
◆RCP 4716 BLA	1,000 lb./16	44¾ x 31 x 38¼	75 lbs.	

**B. Cube Trucks**

Metal frame design provides durable support for commercial waste collection. Also ideal for commercial or institutional laundry handling. NSF/USDA Approved for use in food processing applications. Black.

No.	Capacity/ Cubic Ft.	Size (L x W x H)	Shpg. Wt.	Each
◆RCP 4608 BLA	300 lb./8	38 x 26 x 28½	36 lbs.	
◆RCP 4612 BLA	400 lb./12	42¾ x 28 x 33	40 lbs.	
◆RCP 4614 BLA	500 lb./14	44¾ x 31 x 32½	47 lbs.	
◆RCP 4616 BLA	500 lb./16	43¾ x 31 x 37	51 lbs.	
◆RCP 4619 BLA	600 lb./20	48 x 34¾ x 36½	60 lbs.	

**C. Cube Truck Lids**

Domed, hinged lid conceals loads without affecting capacity. Black.

No.	For RCP Model	Shpg. Wt.	Each
◆RCP 4609 BLA	4608	13.5 lbs.	
◆RCP 4613 BLA	4612, 4712	14.3 lbs.	
◆RCP 4615 BLA	4614, 4616, 4716	17.2 lbs.	
◆RCP 4617 BLA	4619	18.8 lbs.	

**D. Spring Platform Cube Truck**

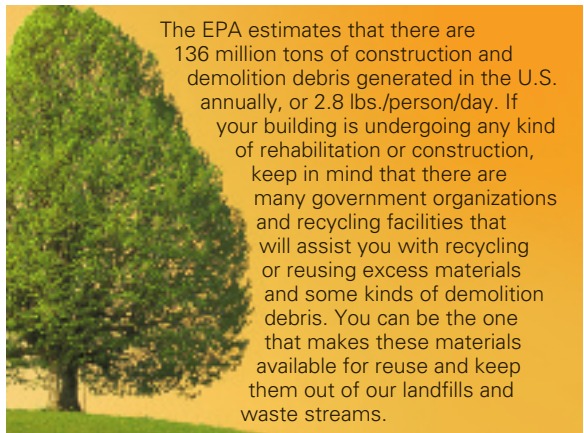
Metal frame design provides durable support for commercial waste or laundry collection up to 500 lbs. or 14 cubic feet. Features a spring platform that brings contents to a convenient working level. The platform is covered with easy-to-clean plastic laminate; spring assembly covered by protective heavy-duty white vinyl. Black. 44¼ x 31w x 32½h. Shpg. wt. 60 lbs.

◆RCP 4611 BLA		Each
---------------	--	------

**E. Structural Foam Tilt Trucks**

For general refuse collection and light to medium materials handling. Fits through standard commercial doorways and onto elevators easily. Inset, mark-resistant casters roll smoothly over thresholds and rough surfaces. USDA MEAT and poultry equipment compliant. Black. ¾ cubic yard, 64½l x 30¼w x 38h.

No.	Capacity	Shpg. Wt.	Each
◆RCP 1011 BLA	600 lb.	92 lbs.	
◆RCP 1013 BLA	1,000 lb.	101 lbs.	



The EPA estimates that there are 136 million tons of construction and demolition debris generated in the U.S. annually, or 2.8 lbs./person/day. If your building is undergoing any kind of rehabilitation or construction, keep in mind that there are many government organizations and recycling facilities that will assist you with recycling or reusing excess materials and some kinds of demolition debris. You can be the one that makes these materials available for reuse and keep them out of our landfills and waste streams.

## Keep on truckin'...



### A. Tilt Trucks

Specially made to handle bulky, medium- to heavyweight materials. Sturdy, plastic construction. Easy to maneuver and dump contents. Wheels and axle are inset to prevent damage to interior surfaces and equipment. Black. (Optional lids, for ½ and 1 cubic yard capacities, sold separately.)

No.	Capacity	Size (L x W x H)	Shpg. Wt.	Each
<b>½ Cubic Yard*</b>				
◆RCP 1304 BLA	450 lbs.	56¾ x 28 x 38½	62 lbs.	
◆RCP 1305 BLA	850 lbs.	60½ x 28 x 38½	77 lbs.	
◆RCP 1306 BLA	1,400 lbs.	60½ x 28 x 38½	88 lbs.	
<b>1 Cubic Yard</b>				
◆RCP 1314 BLA	850 lb.	72¼ x 33½ x 43¾	111 lbs.	
◆RCP 1315 BLA	1,250 lb.	72¼ x 33½ x 43¾	111 lbs.	
◆RCP 1316 BLA	2,100 lb.	72¼ x 33½ x 43¾	120 lbs.	

### 2 Cubic Yard

◆RCP 1035 BLA	1,900 lb.	81¼ x 46¾ x 50	216 lbs.	
---------------	-----------	----------------	----------	--

\* ½ cubic yard tilt trucks do not come with a handle

### B. Forkliftable Tilt Truck

Industrial-strength, rotational molded construction transports heavy loads with ease. Heavy-duty welded fork pockets allow for easy transportation by forklift. Compatible with 42" or 48" long forks. Easy to maneuver and dump contents; constant force design allows for controlled dumping by one person. Smooth surface is easy to clean and resists pitting and corroding. Black. 1,250-lb. x 1 cubic yard capacity. (Optional lid sold separately.) 72¼l x 33½w x 43¾h. Shpg. wt. 124 lbs.

◆RCP 1315-42 BLA	Each
------------------	------

### C. Tilt Truck Lids

Domed, hinged lid conceals loads without reducing capacity. Black.

No.	For RCP Model	Shpg. Wt.	Each
◆RCP 1307 BLA	1304, 1305, 1306, 9T17	23.3 lbs.	
◆RCP 1317 BLA	1314, 1315, 1315-42, 1316, 9T18	24 lbs.	

### D. Tilt Trucks

Sturdy, plastic construction. Smooth and seamless, one-piece molded truck bodies with reinforced lip are rounded and easy to clean. 4" center swivel back caster provides easy maneuvering. Durable, one-piece, 10" blow-molded polypropylene wheels offer low maintenance and protect surroundings. Powder coated steel frame for corrosion resistance. Black.

No.	Capacity	Size (L x W x H)	Shpg. Wt.	Each
<b>½ Cubic Yard*</b>				
◆RCP 9T17 BLA	300 lb.	56¾ x 28 x 38½	46.3 lbs.	
<b>1 Cubic Yard</b>				
◆RCP 9T18 BLA	600 lb.	72¼ x 33½ x 43¾	98.6 lbs.	

\* ½ cubic yard tilt trucks do not come with a handle

### E. Big Wheel™ Utility Cart

Heavy-duty structural foam construction hauls up to 300 lbs. Durable, one-piece tub construction. Reinforced ribbing provides added impact resistance. Smooth, easy-to-dump, easy-to-clean pan. Level capacity 7½ cubic feet. Comfortable, molded, structural foam handles. Steel axle and large 20 x 2¼ wheels with pneumatic tires. Black. 32¾w x 57½d x 28¼h. Shpg. wt. 45 lbs.

◆RCP 5642 BLA	Each
---------------	------



Center hinge lets lid open from either end.



Compatible with forklifts.



◆ This symbol denotes items that cannot ship via UPS.

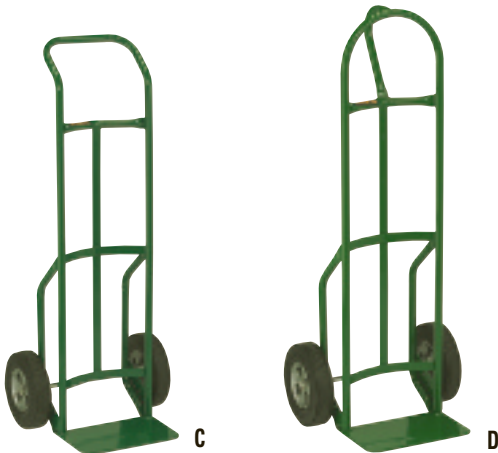


A



Handle folds flat for use as a dolly.

B



C

D



Use as a two-wheel hand truck or a four-wheel platform truck with two swivel casters.

E



**PLATFORM TRUCKS**

**A. Heavy-Duty Platform Trucks**

Structural foam platform with tough honeycomb construction supports heavy loads and won't rust, dent or splinter. Removable, powder coated steel handle has two cross braces to keep materials on deck. Four casters, two swivel. Black.

No.	Capacity	Shpg. Wt.	Each
<b>36 x 24 Platform</b>			
◆RCP 4406 BLA	1,000 lb.	63 lbs.	
<b>48 x 24 Platform</b>			
◆RCP 4433 BLA	500 lb.	70 lbs.	
◆RCP 4436 BLA	1,000 lb.	78 lbs.	
<b>60 x 30 Platform</b>			
◆RCP 4461 BLA	500 lb.	87 lbs.	
◆RCP 4466 BLA	1,000 lb.	88 lbs.	
◆RCP 4471 BLA	2,000 lb.	101 lbs.	

**B. Home and Office Carts**

Three-position handle moves upright for pushing, angles for pulling or folds flat for use as a dolly or for storage. Structural foam platform won't rust, dent or bend. 500-lb. capacity model has ergonomic handle for easier movement and 5" dia. casters for extra stability. Nonskid platform is 20 1/2 x 31 1/4 (35 1/2 with handle flat). Four nonmarking casters, two swivel. Black.

No.	Capacity	Shpg. Wt.	Each
<b>Utility Duty</b> —(Not shown.)			
RCP 4400 BLA	250 lb.	21 lbs.	
<b>Standard Duty</b>			
RCP 4401 BLA	500 lb.	25 lbs.	



**STEEL HAND TRUCKS**

- Heavy-gauge welded tubular steel frames

**Two-Wheel Hand Trucks**

Large 7 x 14 beveled steel toe plate for big loads. 500-lb. capacity. Steel stair glides. 10 x 2 3/4 solid rubber tires. Green enamel finish.

No.	Overall Size	Shpg. Wt.	Each
<b>C. Continuous Handle</b>			
WES 656Z2	21 3/4w x 48h	34 lbs.	
<b>D. Loop Handle</b>			
WES 626DZ2	21 3/4w x 50 1/2h	34 lbs.	

**E. Two-Way Convertible Truck**

Converts easily from a two-wheel, 500-lb. capacity hand truck to a four-wheel, 600-lb. capacity platform truck. 7 x 14 beveled steel nose plate. Two 10 x 2 3/4 solid rubber tires, two 5" swivel casters. Green enamel finish. Overall 20w x 48h. Shpg. wt. 38 lbs.

WES 65621Z2			<b>Each</b>
-------------	--	--	-------------

See pages 247-269 for Facility Maintenance & Safety

Start tooling around... a pre-stocked tool kit meets your office maintenance needs.



Items with this symbol require assembly.  
◆ This symbol denotes items that cannot ship via UPS.



**A. Five-Drawer Mobile Workcenter**

Heavy-duty worksurface supports up to 250 lbs. Five storage drawers for tools, supplies and more. Tabletop bins keep small parts within reach. Peg board side panels provide convenient tool organization. Built-in cord wrap allows neat storage of power tools or work lights. Locking bar. Polypropylene. Four swivel casters (two locking). Black/Red. 32.6w x 19.8d x 33.5h. Shpg. wt. 69 lbs.

◆RCP 7734-88 BLA **Each**



Locking bar provides security and holds drawers in place.

**TRADES CARTS**

Perfect for facility maintenance work. Structural foam construction. Ergonomic top surface provides a handy work area for items weighing up to 180 lbs. Bottom shelf holds up to 150 lbs. Total cart capacity 450 lbs. (including drawers). Four removable parts boxes for assorted parts and hardware. Two storage drawers hold supplies. Molded-in, wraparound handle features storage bin for small tools and parts. Mounting bracket serves as cord wrap or holds wastebasket. 5" nonmarking swivel casters (two locking). Black. 38w x 19¼d x 33¾h.

**B. Trades Cart**

Two shelves. Shpg. wt. 50.3 lbs. ☒

RCP 6180 BLA **Each**



**C. Trades Cart with Locking Cabinet**

Fully enclosed, lockable storage compartment keeps costly tools and sensitive materials secure. Shpg. wt. 68 lbs. ☒

RCP 6180-88 BLA **Each**



Lockable cabinet.

**HEAVY-DUTY UTILITY CARTS**

- Multiple-duty carts for use in warehouses, mailrooms, conference rooms and maintenance facilities
- Heavy-duty plastic won't rust, dent, chip or peel
- Lightweight for easy maneuverability and quiet operation
- Rounded corners mean no sharp edges to nick walls or furniture

**D. Convertible Utility Cart**

- Multifunction cart converts from a utility cart to a platform truck in just seconds

Simple push-buttons and foot pedal for easy conversion. 400-lb. capacity (utility cart); 250-lb. capacity (platform truck). Recessed top shelf folds down to create back of platform truck. Platform truck configuration features 24 x 36 usable platform. Molded-in ergonomic handle for comfort. Non-marking swivel casters (two locking). Black/Red. 23¾w x 45¼d. 34¾" high (utility cart); 43¾" high (platform truck); collapses to just 10¾" high for efficient storage.

RCP 4300 BLA **Each**



**NEW!**

**250**  
LB. CAPACITY



Shown as platform truck.



Folds flat for storage.

☒ Items with this symbol require assembly.  
◆ This symbol denotes items that cannot ship via UPS.

Housekeeping Carts • Utility Carts

**NEW!**



A



**EXECUTIVE SERVICE CART**

**A.** Highly aesthetic design for front and back of house applications. Extra-large top shelf fits two 4½-gallon bus boxes (RCP 3349 GRA, sold separately). Shelves feature raised edges and sturdy side panels keep contents secure. Thick shelves provide added strength; 300-lb. weight load capacity. Two rounded ergonomic handles for comfort. Solid base bumper protects walls and furniture. Durable, easy-to-clean polypropylene construction. Heavy-duty, non-marking 4" casters. Black. 21w x 29d x 38h.

RCP 9T68 BLA **Each**

**500**  
LB. CAPACITY



B



Convenient cup holder and storage slot.

**500**  
LB. CAPACITY

**B. Heavy-Duty Service/Utility Carts**

Structural foam construction, 500-lb. capacity. Two tray-style shelves, cup holder and storage slot to stay organized. 5" molded-in ergonomic full round handle for comfort. Nonmarking casters (two swivel). 33¼" high.

No.	Color	Size (W x D)	Shpg. Wt.	Each
RCP 4500-88 BEI	Beige	17½ x 39¼	32 lbs.	
RCP 4500-88 BLA	Black	17½ x 39¼	32 lbs.	
RCP 4520-88 BEI	Beige	25½ x 45¼	45 lbs.	
RCP 4520-88 BLA	Black	25½ x 45¼	45 lbs.	

Front "hook" holds extension cord or soft wastebasket. Handle bin stores small parts and tools.



C

**C. Flat Shelf Utility Carts**

Structural foam construction, 500-lb. capacity. Flat shelves provide a smooth worksurface and allow easy loading. Molded-in wraparound handle with convenient storage bin. Front mounting bracket holds wastebasket, extension cord or power strip. 5" nonmarking casters. 33¼" high.

No.	Color	Size (W x D)	Shpg. Wt.	Each
RCP 4505 BEI	Beige	37¼ x 19½	33 lbs.	
RCP 4505 BLA	Black	37¼ x 19½	33 lbs.	
RCP 4525 BEI	Beige	43¼ x 25½	43 lbs.	



D

**300**  
LB. CAPACITY

**D. Service/Utility Carts**

Structural foam construction, 300-lb. capacity. Two tray-style shelves securely hold contents. Molded-in handle with convenient storage compartments. 4" nonmarking swivel casters. Easy assembly. Black. 31¼" high.

No.	Size (W x D)	Shpg. Wt.	Each
RCP 9T66 BLA	16 x 34	36¼ lbs.	
RCP 9T67 BLA	24 x 40	42¼ lbs.	

**300**  
LB. CAPACITY



E

**E. Instrument Cart**

• For use in hospitals, health care centers, labs and hotels/motels for transporting instruments and supplies. Three smooth, easy-to-clean shelves, sliding top drawer and two molded handles. Enclosed bottom shelf has locking doors to secure contents. 300-lb. maximum load capacity; 100 lbs. per shelf. Easy "pound-together" assembly. Gray with nonmarking casters. 40½w x 20d x 37¼h. Shpg. wt. 51½ lbs.

RCP 4094 GRA **Each**

**F. Three-Shelf AV/Equipment Cart, Lockable Enclosed Shelf**

300-lb. total load capacity (100 lbs. per shelf). Sized to carry large loads. Rounded corners won't damage walls. Upscale appearance ideal for institutional, warehouse or front office use. Large textured shelves hold a variety of equipment and supplies. Durable, structural web construction resists scratches, chips and rust. Lightweight and easy to handle. Quiet, nonmarking casters. Comfortable, rounded handles have molded-in storage bins for small items. Black. 40½w x 20¼d x 37¼h. Shpg. wt. 52 lbs.

RCP 4095 BLA **Each**



F

**300**  
LB. CAPACITY

**000**  
LB. CAPACITY

**Weight Capacity**

The maximum weight that this product can accommodate.

Items with this symbol require assembly.



**UTILITY CARTS**

- Sized to carry large loads and reduce return trips
  - Rounded corners won't damage walls
- Upscale appearance is ideal for institutional, warehouse or front office use. Large textured shelves hold a variety of equipment and supplies. Durable, structural web construction resists scratches, chips and rust. Lightweight and easy to handle with quiet, nonmarking casters. Comfortable, rounded handles.

No.	Color	Shpg. Wt.	Each
-----	-------	-----------	------

**A. 3-Shelf Utility Cart, Open All Sides**—300-lb. total load capacity (100 lbs. per shelf). 40 $\frac{1}{2}$ w x 20d x 37 $\frac{1}{2}$ h.

RCP 4091 CRE	Off-White	46 lbs.	
RCP 4091 BLA	Black	46 lbs.	

**B. 4-Shelf Utility Cart, Open All Sides**—300-lb. total load capacity (75 lbs. per shelf). 40 $\frac{1}{2}$ w x 20d x 51h.

RCP 4096 BLA	Black	52 lbs.	
--------------	-------	---------	--

**C. 3-Shelf Utility Cart, Enclosed On 3 Sides**—300-lb. total load capacity (100 lbs. per shelf). 40 $\frac{1}{2}$ w x 20d x 37 $\frac{1}{2}$ h.

RCP 4093 CRE	Off-White	51 lbs.	
RCP 4093 BLA	Black	51 lbs.	

**THREE-SHELF UTILITY/SERVICE CARTS**

- Quiet operation
- Dual-molded handles; nonmarking swivel casters
- Easy-to-clean smooth surfaces

**D. Three-Shelf Utility Cart with Brushed Aluminum Uprights**

Ideal for offices or foodservice. 200-lb. total load capacity. Shelves have slight lip on three sides; one flat side for easy loading. 4" diameter casters. Assembles easily in minutes. 18 $\frac{1}{2}$ w x 33 $\frac{1}{2}$ d x 37 $\frac{1}{2}$ h. Shpg. wt. 30 lbs.

RCP 3424-88 BLA	Black	<b>Each</b>
RCP 3424-88 PLA	Platinum	<b>Each</b>

**E. Three-Shelf Service Cart with Brushed Aluminum Uprights**

Ideal for office use. 100-lb. total load capacity. Shelves have one flat side for easy loading; lip on three sides. 3" diameter swivel casters. Easy to assemble. Beige. 16 $\frac{1}{2}$ w x 31 $\frac{1}{2}$ d x 36h. Shpg. wt. 21 $\frac{1}{2}$  lbs.

RCP 9T65-71 BEI	<b>Each</b>
-----------------	-------------

**F. Three-Shelf Utility Cart with Enclosed End Panels**

Ideal for offices or foodservice. Flat shelves. Enclosed on two sides. 300-lb. total load capacity. 4" diameter casters. Platinum. 18w x 31d x 37 $\frac{1}{2}$ h. Shpg. wt. 38.6 lbs.

RCP 3355-88 PLA	<b>Each</b>
-----------------	-------------

**UTILITY CART BINS**

Handy bins convert utility carts to busing systems. Top rim has a lip which rests on cart beneath the handle. For RCP 3355-88, 3424-88, 4091, 4093, 4094, 4095 and 4096 Utility Carts.

**G. Refuse Bin**

8-gallon capacity. Black. 17w x 12d x 22h.

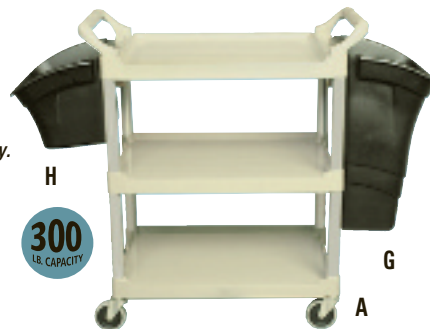
RCP 3353-88 BLA	<b>Each</b>
-----------------	-------------

**H. Utility Bin**

4-gallon capacity. Black. 17w x 12 $\frac{1}{2}$ d x 10 $\frac{1}{2}$ h.

RCP 3354-88 BLA	<b>Each</b>
-----------------	-------------

Refuse Bin G. (RCP 3353-88 BLA) and Utility Bin H. (RCP 3354-88 BLA) each sold separately.



**000 Weight Capacity**  
 The maximum weight that this product can accommodate.

Items with this symbol require assembly.